

Photometrics Pro

Luminaire Photometric Report

Filename: SB03-450W

Lamp Output: Total luminaire Lumens: 57083.9

Max Candela: 23,067.9 at Horizontal: 292.5°, Vertical: 64°

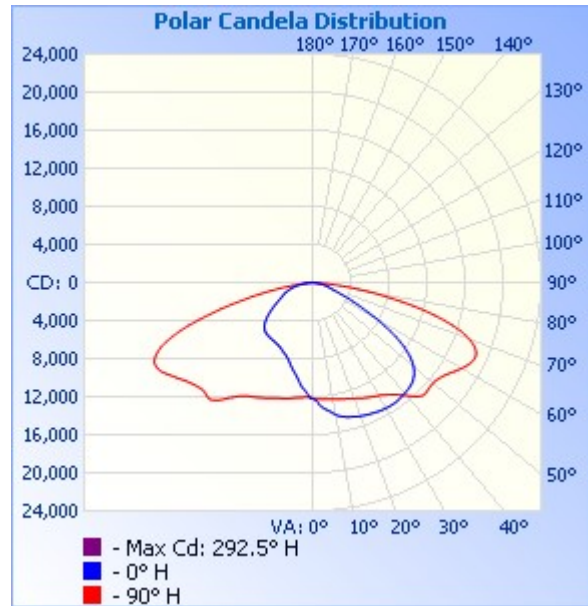
Input Wattage: 451.6

Luminous Opening: Point

Photometry : Type C

Cutoff Class: Semicutoff

Nema Type: 7 X 7



Flood Summary

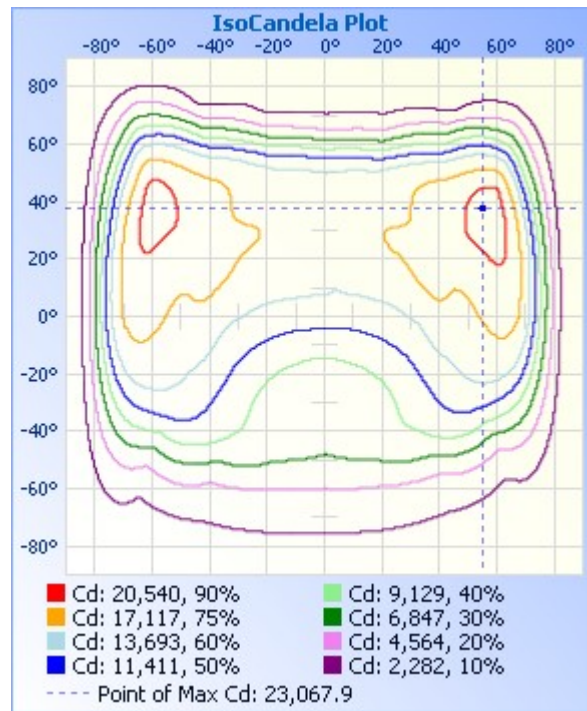
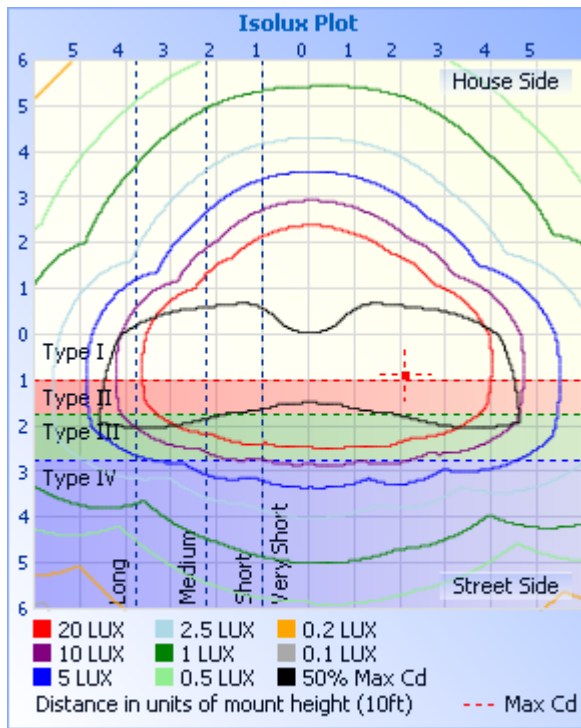
	Efficiency	Lumens	Horizontal Spread	Vertical Spread
Field (10%):	97.5%	55,676.3	164.7	138.5
Beam (50%):	68.2%	38,951.3	145.8	91
Total:	100%	57,105.1		

Zonal Lumen Summary

Zone	Lumens	% Luminaire
0-30	10,281.9	18%
0-40	18,523.4	32.4%
0-60	40,378.9	70.7%
60-90	16,561.3	29%
70-100	6,709.3	11.8%
90-120	71.5	0.1%
0-90	56,940.2	99.7%
90-180	143.7	0.3%
0-180	57,083.9	100%

Lumens Per Zone

Zone	Lumens	% Total	Zone	Lumens	% Total
0-5	289.9	0.5%	90-95	21.2	0%
5-10	868.9	1.5%	95-100	9.7	0%
10-15	1,439.8	2.5%	100-105	9.7	0%
15-20	1,998.1	3.5%	105-110	10.1	0%
20-25	2,554.5	4.5%	110-115	10.4	0%
25-30	3,130.8	5.5%	115-120	10.4	0%
30-35	3,775.0	6.6%	120-125	10.2	0%
35-40	4,466.5	7.8%	125-130	9.9	0%
40-45	5,009.2	8.8%	130-135	9.5	0%
45-50	5,415.9	9.5%	135-140	8.9	0%
50-55	5,708.3	10.0%	140-145	7.9	0%
55-60	5,722.0	10.0%	145-150	6.7	0%
60-65	5,334.2	9.3%	150-155	5.5	0%
65-70	4,548.7	8.0%	155-160	4.5	0%
70-75	3,404.7	6.0%	160-165	3.7	0%
75-80	2,071.8	3.6%	165-170	2.9	0%
80-85	956.3	1.7%	170-175	1.9	0%
85-90	245.5	0.4%	175-180	0.7	0%



Coefficients Of Utilization - Zonal Cavity Method

Effective Floor Cavity Reflectance: 20%

RCC %:	80				70				50			30			10			0
RW %:	70	50	30	0	70	50	30	0	50	30	20	50	30	20	50	30	20	0
RCR: 0	1.19	1.19	1.19	1.19	1.16	1.16	1.16	1.00	1.11	1.11	1.11	1.06	1.06	1.06	1.02	1.02	1.02	1.00
1	1.07	1.02	.97	.93	1.04	1.00	.95	.82	.95	.92	.88	.91	.88	.85	.87	.85	.83	.81
2	.96	.87	.79	.73	.93	.85	.78	.66	.81	.75	.70	.78	.73	.68	.75	.70	.67	.64
3	.86	.75	.66	.58	.84	.73	.65	.54	.70	.63	.57	.67	.61	.55	.64	.59	.54	.52
4	.78	.65	.55	.48	.76	.64	.54	.45	.61	.53	.47	.58	.51	.46	.56	.50	.45	.43
5	.71	.57	.47	.40	.69	.56	.47	.38	.54	.45	.39	.52	.44	.39	.50	.43	.38	.36
6	.65	.51	.41	.34	.63	.50	.40	.32	.48	.39	.33	.46	.39	.33	.44	.38	.33	.30
7	.60	.45	.36	.29	.58	.45	.36	.28	.43	.35	.29	.41	.34	.29	.40	.33	.28	.26
8	.56	.41	.32	.26	.54	.40	.32	.25	.39	.31	.25	.38	.30	.25	.36	.30	.25	.23
9	.52	.37	.29	.23	.50	.37	.28	.22	.35	.28	.22	.34	.27	.22	.33	.27	.22	.20
10	.48	.34	.26	.20	.47	.34	.26	.20	.33	.25	.20	.32	.25	.20	.31	.24	.20	.18

Candela Table - Type C

	0	22.5	45	67.5	90	112.5	135	157.5	180	202.5	225	247.5	270	292.5	315	337.5	360
0	12143	12143	12143	12143	12143	12143	12143	12143	12143	12143	12143	12143	12143	12143	12143	12143	12143
1	12283	12160	12238	12245	12234	12205	12168	12130	12204	12078	12040	12040	12006	11997	11996	11961	11968
2	12404	12418	12330	12290	12220	12158	12079	12004	11907	11955	11959	11982	12008	12058	12077	12078	12093
3	12770	12700	12590	12437	12233	12025	11819	11657	11606	11623	11724	11868	12040	12211	12354	12420	12437
4	13044	12895	12789	12562	12259	11927	11621	11375	11358	11366	11526	11795	12068	12361	12571	12683	12707
5	13248	13040	12949	12665	12287	11866	11474	11178	11184	11155	11374	11725	12111	12470	12735	12881	12924
6	13410	13216	13076	12739	12307	11807	11354	10983	10994	10992	11270	11687	12141	12562	12870	13026	13077
7	13533	13452	13192	12827	12320	11760	11240	10831	10701	10846	11165	11652	12171	12648	12991	13158	13205
8	13699	13658	13313	12901	12338	11695	11091	10651	10414	10647	11032	11601	12207	12759	13144	13314	13379
9	13912	13827	13513	13044	12380	11622	10884	10397	10148	10369	10846	11540	12256	12903	13335	13543	13592
10	14090	13961	13668	13163	12426	11545	10698	10125	9924	10120	10671	11476	12318	13044	13507	13711	13778

60	8093	10348	16307	21043	18027	11837	6611	4972	4465	4710	5810	10764	18503	22433	15764	9286	7489
61	7326	9651	15872	21397	18246	11477	6236	4701	4269	4450	5386	10213	18619	22722	15118	8518	6797
62	6587	8916	15328	21740	18455	11074	5842	4441	4081	4211	4990	9594	18671	22945	14401	7775	6137
63	5885	8136	14705	22019	18615	10608	5483	4197	3910	3984	4614	8905	18653	23063	13623	7035	5532
64	5260	7354	14004	22260	18749	10083	5125	3978	3756	3782	4261	8258	18499	23068	12755	6358	4970
65	4683	6583	13250	22419	18798	9496	4778	3777	3613	3604	3938	7538	18230	22937	11865	5698	4463
66	4164	5845	12430	22486	18780	8873	4449	3600	3480	3443	3669	6824	17830	22656	11005	5113	4008
67	3696	5175	11577	22441	18657	8255	4149	3437	3355	3296	3430	6131	17297	22207	10118	4552	3592
68	3268	4548	10701	22282	18431	7607	3869	3286	3236	3159	3214	5503	16606	21595	9203	4048	3211
69	2869	3985	9818	21950	18078	6950	3616	3150	3117	3039	3012	4899	15778	20855	8299	3579	2849
70	2531	3465	8932	21473	17611	6316	3384	3026	3000	2921	2838	4349	14842	19958	7471	3135	2536
71	2277	2978	8037	20819	17016	5715	3164	2912	2874	2806	2681	3840	13750	18847	6658	2703	2290
72	2100	2536	7162	20025	16286	5140	2966	2798	2744	2690	2537	3401	12509	17506	5869	2333	2118
73	1963	2199	6308	19081	15415	4589	2786	2680	2607	2562	2394	3004	11250	16066	5093	2057	1984
74	1846	1955	5491	17979	14417	4096	2621	2555	2465	2415	2258	2640	10059	14578	4360	1850	1864
75	1726	1775	4707	16747	13312	3638	2461	2412	2325	2271	2126	2328	8824	12888	3638	1682	1741
76	1602	1632	3970	15410	12112	3219	2309	2267	2185	2140	1991	2066	7616	11203	2875	1537	1614
77	1462	1502	3224	13976	10857	2833	2156	2131	2034	2006	1840	1856	6543	9631	2180	1401	1465
78	1312	1378	2533	12496	9532	2481	1999	2000	1872	1871	1679	1676	5534	8219	1667	1263	1304
79	1167	1251	1994	10979	8239	2173	1836	1865	1696	1718	1527	1521	4594	6855	1310	1135	1148
80	1026	1136	1598	9522	7037	1910	1667	1725	1505	1534	1384	1379	3671	5679	1065	1017	992
81	876	1027	1308	8132	5894	1697	1513	1578	1300	1330	1234	1242	2826	4644	866	902	828
82	712	919	1090	6858	4827	1514	1369	1418	1115	1152	1082	1107	2118	3766	699	788	672
83	561	808	905	5679	3827	1352	1232	1251	988	992	920	963	1542	2801	544	674	535
84	432	701	745	4660	2918	1198	1094	1078	879	797	742	803	1025	1903	405	553	417
85	324	584	586	3551	2138	1052	945	905	744	663	564	648	626	1261	280	424	314
86	227	463	440	2457	1485	895	768	736	634	521	404	499	380	754	187	297	223
87	147	343	314	1728	963	740	588	583	523	399	279	340	245	365	113	192	148
88	79	228	212	1097	594	588	427	448	416	286	180	205	158	156	61	88	85
89	19	126	133	585	359	428	303	321	294	175	105	108	89	67	27	14	24
90	10	22	72	235	230	278	200	199	171	83	54	53	40	30	14	10	10
91	10	13	32	91	148	162	118	99	80	29	28	34	33	25	12	10	10
92	9	13	18	44	80	85	62	36	23	18	24	32	32	23	12	9	10
93	9	12	16	27	38	40	30	17	12	16	23	32	31	22	11	9	9
94	9	11	15	25	30	29	22	14	11	15	22	32	31	21	11	8	8
95	8	10	14	24	30	28	21	13	11	14	22	31	31	20	10	8	8
96	8	10	13	23	29	28	20	12	11	14	22	31	30	20	10	9	8
97	8	10	12	22	28	28	20	13	11	14	22	31	30	19	10	9	8
98	8	10	12	21	28	28	20	12	11	14	22	32	30	18	10	8	8
99	8	9	12	20	29	29	20	12	10	14	22	32	30	18	10	8	8
100	8	9	11	19	28	29	21	12	10	13	22	32	31	18	10	9	8
101	8	9	11	19	28	30	21	12	10	13	22	32	30	18	10	9	8
102	8	9	10	19	29	31	21	13	11	14	23	33	30	18	10	9	8
103	8	9	10	18	29	31	22	13	11	14	24	33	30	18	11	9	8
104	8	9	10	18	30	31	22	13	11	14	24	33	31	19	11	9	8
105	8	9	11	18	29	31	23	14	11	14	24	33	31	19	11	9	8
106	9	9	11	18	29	32	24	14	12	15	25	33	31	19	11	10	8
107	9	9	11	18	30	32	24	15	13	16	26	34	31	19	12	10	8
108	9	9	11	19	30	32	24	15	13	16	26	34	31	20	12	9	9

109	9	9	11	19	31	32	24	16	13	17	26	34	31	20	13	10	9
110	9	9	12	19	31	32	25	16	14	17	27	34	31	21	13	10	9
111	10	10	12	19	31	32	25	16	14	18	27	34	31	21	13	10	9
112	10	10	12	20	31	32	25	17	15	18	27	34	31	21	13	11	9
113	10	10	12	20	31	31	25	18	15	19	28	34	31	21	14	10	10
114	10	10	13	20	32	32	25	18	16	19	28	34	30	21	14	11	10
115	10	10	13	21	31	32	26	18	16	20	28	35	30	22	14	11	10
116	10	11	13	21	31	32	26	18	17	20	28	34	30	21	14	12	10
117	11	11	13	21	31	32	25	19	17	20	28	35	31	21	15	12	10
118	11	11	14	21	32	32	25	19	17	20	29	35	31	21	15	12	10
119	11	11	14	21	32	32	25	19	17	20	29	35	30	21	15	12	11
120	11	11	14	21	32	32	25	19	18	21	29	35	30	21	15	12	11
121	11	11	14	22	32	32	25	19	18	21	29	35	31	21	15	12	11
122	11	12	14	22	32	32	25	20	18	21	29	36	31	21	15	12	11
123	11	12	14	22	32	32	25	20	18	21	29	36	32	21	15	12	11
124	11	12	15	22	32	33	26	20	18	22	30	36	31	21	15	12	11
125	11	12	15	22	32	34	26	20	19	22	29	37	32	21	15	12	11
126	12	12	15	22	32	34	26	20	19	22	29	37	32	21	15	13	11
127	12	12	15	22	33	35	26	20	20	22	30	36	32	21	15	13	11
128	12	12	15	22	33	35	27	21	20	22	30	37	33	21	15	12	12
129	12	12	15	22	33	35	28	21	20	23	30	37	32	22	15	13	12
130	12	12	15	22	33	36	28	21	20	23	30	37	32	22	15	13	12
131	12	12	15	23	33	36	28	21	20	23	30	37	32	22	15	13	12
132	12	13	15	23	33	36	28	22	21	23	30	37	32	22	15	13	12
133	12	13	16	22	33	36	28	22	21	24	31	36	32	22	16	13	12
134	12	13	16	22	32	36	29	23	21	24	30	36	32	22	16	13	12
135	13	13	16	23	32	36	29	23	22	25	30	35	32	22	16	14	12
136	13	13	16	23	32	36	29	24	22	25	30	35	32	22	16	13	12
137	13	14	16	23	32	35	29	24	23	25	31	35	31	22	16	14	12
138	13	14	17	23	32	35	30	25	23	26	31	35	31	23	17	14	13
139	13	14	17	23	31	34	30	25	24	26	30	34	30	22	16	14	13
140	14	14	17	23	31	34	30	25	24	26	30	33	30	22	17	14	13
141	14	14	17	23	30	33	30	25	24	26	30	32	29	22	17	14	13
142	14	15	17	23	30	32	29	25	25	26	30	32	29	23	18	14	13
143	14	15	17	23	29	31	29	26	25	27	29	31	28	22	17	15	13
144	14	15	18	23	28	31	29	26	25	27	29	30	27	22	17	15	14
145	14	15	18	23	28	30	28	26	25	27	29	30	27	22	18	15	14
146	14	15	18	23	27	29	28	26	26	27	28	29	27	22	18	15	14
147	14	16	18	22	27	28	28	26	26	26	28	28	26	22	18	15	14
148	15	16	18	22	26	28	27	26	25	26	28	28	25	21	18	15	14
149	15	15	18	22	25	27	27	26	25	26	27	27	25	21	18	16	15
150	15	16	18	21	25	27	26	26	25	26	27	26	24	21	18	16	15
151	15	16	18	21	24	26	26	25	26	26	27	26	24	21	18	16	15
152	15	16	18	21	24	25	26	25	25	26	26	25	23	21	18	16	15
153	16	16	18	20	23	25	25	25	25	25	25	25	23	21	18	16	15
154	16	16	18	20	23	25	25	25	24	25	25	24	23	20	18	16	16
155	16	17	18	20	23	24	24	24	24	25	25	24	22	20	19	16	16
156	16	17	18	20	22	24	24	24	24	25	25	23	22	20	19	16	16
157	17	16	18	20	22	23	24	24	24	25	24	23	22	20	19	17	16

158	17	17	18	20	22	23	24	24	24	24	24	24	22	20	19	17	17
159	17	18	18	20	22	23	24	24	24	24	25	23	22	20	20	18	17
160	18	18	19	20	22	23	24	24	24	25	25	24	22	21	20	18	17
161	18	18	19	20	22	23	24	24	24	25	24	24	22	20	20	18	18
162	18	18	20	21	22	24	24	24	24	25	25	24	22	21	21	19	18
163	19	19	20	21	23	23	24	25	25	25	25	24	22	21	21	19	18
164	20	19	20	21	23	24	24	25	26	26	25	25	23	22	21	20	20
165	20	20	21	22	23	24	25	25	26	26	25	25	24	22	22	21	20
166	21	21	21	22	24	24	25	26	27	26	26	25	24	23	23	21	20
167	22	21	22	22	24	25	25	26	27	27	26	26	25	24	23	22	22
168	22	22	22	23	24	25	26	26	27	27	27	26	25	24	24	23	22
169	24	23	22	23	25	25	26	27	28	28	28	28	26	26	25	24	23
170	25	23	23	24	25	26	26	27	28	28	28	28	27	26	26	25	24
171	25	24	24	25	26	27	27	28	29	29	28	28	28	27	27	26	24
172	26	25	25	25	26	27	27	28	29	30	29	29	28	28	27	26	25
173	26	26	26	26	26	27	27	28	29	29	30	30	29	29	28	27	26
174	27	27	26	26	27	27	27	28	29	30	30	30	30	29	29	28	27
175	28	27	27	26	27	27	28	28	30	30	31	31	31	30	29	28	27
176	28	28	27	27	27	27	27	28	30	31	31	31	31	30	30	29	28
177	28	28	27	27	27	27	28	28	30	30	31	31	30	30	30	29	28
178	29	28	27	27	27	27	27	28	29	30	31	31	31	31	30	29	28
179	29	28	27	27	27	27	27	28	29	30	31	31	31	31	30	30	28
180	29	29	29	29	29	29	29	29	29	29	29	29	29	29	29	29	29

Luminaire Report Summary

IESNA: LM-63-2002

[TEST]

[TESTLAB]

[ISSUEDATE]

[MANUFAC]

FILE: CREATED USING ABSOLUTE PHOTOMETRY

FILE: CANDELA MULTIPLIER: 1

FILE: VERTICAL ANGLES: 181, HORIZONTAL ANGLES: 17

FILE: COORDINATE SYSTEM: TYPE C

FILE: UNIT OF MEASURE: STANDARD

FILE: BALLAST FACTOR: 1

Photometrics Pro 1.3.29 copyright 2003-2020 by jSolutions, Inc.

Reported data calculated from manufacturer's data file, based on IES recommended methods.